

Description

Our third generation of these TOGGLER plastic toggle anchors provide vibration-proof anchoring of light to medium loads in hollow walls & ceilings ... but also hold securely when they encounter an unexpected solid, such as a wooden stud, or when performing as wedge anchors in materials with thicknesses above their normal wall grip range. Improvements in the original design have increased holding strength and abuse resistance. Holding arms have been thickened and strengthened without increasing insertion hole size, and major stress points have been significantly reinforced without increasing anchor size. Use TOGGLER SNAPTOGGLE® toggle bolts for highest hollow-wall holding strength.



Key Features & Benefits

- ▶ **Strongest** of all plastic toggle anchors—reinforces the wall or ceiling & leads the load away from the hole
- ▶ **Vibration & shock proof**—won't damage walls or ceiling
- ▶ Can use a screw gun—anti-rotation **fins prevent spinning**
- ▶ Accepts **greatest range of screw sizes** in each anchor
- ▶ All install in only a **small 5/16" hole**
- ▶ Pre-install **without the screw**
- ▶ Key-activated **positive locking** system
- ▶ Screw can be **removed and reinserted** in same anchor without loss of holding power
- ▶ **Corrosion-proof** when used with stainless steel screws
- ▶ **Nonmagnetic, nonconductive**
- ▶ All TOGGLER anchors are constructed completely out of **inert, non-toxic materials**

Applications

- | | |
|---------------------|------------------------|
| ▶ Drywall | ▶ Thin paneling |
| ▶ Gypsum board | ▶ Sheet metal |
| ▶ Plasterboard | ▶ Acoustic ceilings |
| ▶ Greenboard | ▶ Masonite® panels |
| ▶ Fiberglass | ▶ Tile over drywall |
| ▶ Hollow core doors | ▶ Tile over greenboard |

Specifications, Listings and Approvals

Materials: Specially formulated grade of non-corrodible polypropylene

Screw Specification: Sheet metal screw or other screw with a sufficiently long thread

Screw Size Range, Diameter:

All sizes (except TA) = #6 through #14
TA = #8 through #12

Temperature Range:

-20°F to 212°F

Minimum Clearance Behind Wall:

All Sizes (except TA) = 3/4"
TA = 1/2"

Grip Range:

TA: 1/8"-1/4"	TB: 3/8"-1/2"
TC: 5/8"-3/4"	TD1: 1"
T35: 1-3/8"	T39: 1-1/2"

Drill Bit Diameter: 5/16" for all sizes

Note: In very hard materials, like ceramic tile, use 3/8" drill bit.

Fed specs:

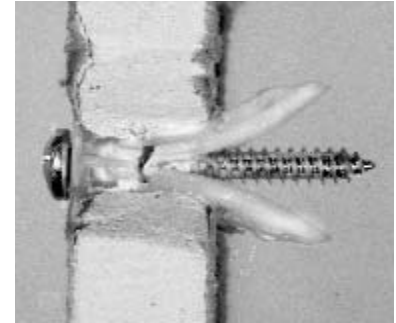
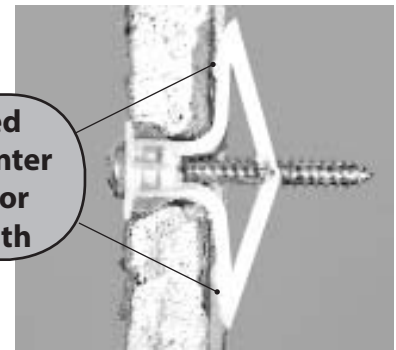
- Type IV anchor in Federal Specification FF-B-588D (superceded)
- No MSDS needed

The Unique Way the TOGGLER Plastic Toggle Anchor Works

The setting key toggles the anchor fully open, locking it in place & forming an over-center, load-bearing truss. Added load acts to increase the holding, as the truss moves the load away from the hole: up against the screw and back down against the surface of the wall. Over-center holding and strong, yet flexible, plastic composition provides high resistance to vibration and stress from dynamic loading—the most common causes of anchor failure. Spreading of the load on the wall surface rather than wedging against the gypsum in the interior of the drywall effectively minimizes drywall failure and puts the load on the wall surfaces to maximize load bearing.

Positive tactile feedback of the setting key, in popping the anchor arms over center, is an absolute indication of proper hollow wall setting of the anchor. Do not place excessive pressure on the key and never use a hammer on it, since failure to set indicates either a solid wall or a wall too thick for the anchor to set in its hollow mode. The anchor will operate under such conditions, however, as a wedge and as a compression solid-wall anchor with significant holding strength.

**Locked
over-center
truss for
strength**



A screw gun is ideal for screw insertion. Anti-rotation fins prevent the anchor from spinning in the wall. The anchors will not collapse or strip out if the head of the screw is simply screwed flush with the object being fastened. **Fastening is complete with the seating of the screw head snugly flush with the object being fastened. Do not continue tightening the screw past this point.**

- The flexibility of the plastic composition of the anchor acts as a cushion against wall gouging or breakage.
- For all of the TOGGLER plastic toggle anchors, use a 5/16" drill bit. In very hard materials, like ceramic tile, use a 3/8" drill bit.
- Where a drill is not available, a #3 blade (1/4") screwdriver, when rotated, will make a 5/16" installation hole in drywall.
- For critical shear load applications, make the folding arms of the anchor open in the direction of the shear load, usually vertical to the floor.
- Use the red (TK) key to set the TA, TB & TC anchors in hollow walls within their grip range.
- Use the black (TKB) key to set the TD, T35 & T39 anchors in hollow walls in their grip range.

The outward folding required by some competitive anchors (NOT by TOGGLER plastic toggle anchors):

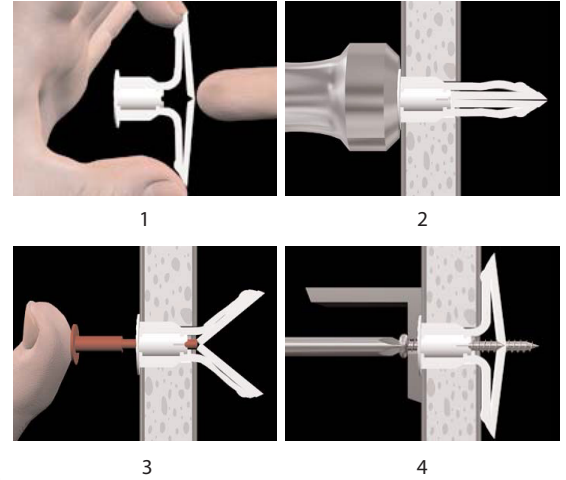
- ▶ requires an extra-long screw, which is more expensive and requires more clearance behind the wall and more time to install
- ▶ has almost no holding power, if the screw enters the anchor at an angle and consequently does not engage the apex of the anchor
- ▶ “strips out” the only region capable of securely holding the screw, because, in order to draw down the anchor leg, one needs to keep turning the screw after it has become flush with a fixture.

Installation Information

Instructions

1. Drill a 5/16" diameter hole. Fold anchor in middle.
Note: Use a 3/8" drill in very hard materials.
2. Insert anchor in hole and tap flush. Only 3/4" clearance needed behind wall. Only 1/2" clearance for the TA anchor.
3. Insert key to pop anchor open behind hollow wall or ceiling (not necessary for thick or solid walls). **Do not** hammer key. Remove key.
4. Place item over anchor. Insert screw and tighten until flush with item—then stop. **Do not** overtighten.

Note: Only the threaded portion of the screw (TL) should be in the anchor itself; any unthreaded shank portion of the screw (S) may be in the fixture or item being anchored, but **not** in the anchor.



Installation Data

Size Selection Chart

	Fully Toggled	Wedge	Expansion Anchor	Screw Size Range	Drill Bit Diameter*
Wall Anchor					
TA®	 T = 1/8"-1/4"	T > 1/4"	X = 1"	D = #8-#12 TL = 1" TL = 1" + S	Ø = 5/16"
TB®	 T = 3/8"-1/2"	T > 1/2"	X = 1-1/4"	D = #6-#14 TL = 1-1/4" L = 1-1/4" + S	Ø = 5/16"
TC®	 T = 5/8"-3/4"	T > 3/4"	X = 1-1/2"	D = #6-#14 TL = 1-1/2" L = 1-1/2" + S	Ø = 5/16"
TD™	 T = 1"	T > 1"	X = 2"	D = #6-#14 TL = 2" L = 2" + S	Ø = 5/16"
T35™	 T = 1-3/8"	T > 1-3/8"	X = 2-1/4"	D = #6-#14 TL = 2-1/4" L = 2-1/4" + S	Ø = 5/16"
T39™	 T = 1-1/2"	T > 1-1/2"	X = 2-1/2"	D = #6-#14 TL = 2-1/2" L = 2-1/2" + S	Ø = 5/16"

* In very hard materials, like ceramic tile, use 3/8" drill bit.

Performance Data

Ultimate Tensile Pull-Out Values (lbs.)

Anchor	Grip Range	Drill Diameter ⁵	Tested Screw Size	Plywood	3/8" Drywall	1/2" Drywall	5/8" Drywall
TA®	1/8" - 1/4"	5/16"	#8	124 ¹	-	-	-
TB®	3/8" - 1/2"	5/16"	#8	175 ²	97	143	102 ³
TC®	5/8" - 3/4"	5/16"	#8	-	-	-	159

Ultimate Shear Pull-Out Values (lbs.)

Anchor	Grip Range	Drill Diameter ⁵	Tested Screw Size	Plywood	3/8" Drywall	1/2" Drywall	5/8" Drywall
TA	1/8" - 1/4"	5/16"	#8	265 ¹	-	126 ⁴	-
TB	3/8" - 1/2"	5/16"	#8	-	126	167	214 ³
TC	5/8" - 3/4"	5/16"	#8	-	-	-	237

¹ 1/4" Plywood was used

² 1/2" Plywood was used

³ #10 screw tested; anchor used as wedge anchor (not toggled fully open), since substrate is thicker than grip range

⁴ Anchor used as a wedge anchor (not toggled fully open), since substrate is thicker than grip range.

⁵ In very hard materials, like ceramic tile, use 3/8" drill bit.

Notes:

- Industry safety standards recommend using only 1/4 of ultimate tensile and shear values as the maximum load per anchor.
- Holding strength for a TOGGLER plastic toggle anchor varies directly with the strength and condition of the substrate, the screw size, and the extent of the screw engagement—and inversely with variations in hole diameter and the distance of the load from the wall.
- All figures in pounds. Pull-out values based on independent laboratory tests done according to U.S. Government standards. They should be used as guides only and cannot be guaranteed. The age, condition, and capacity of the substrate must be considered.



Order Information



TA® Hollow Core Door/Thin Panel Anchors				
Catalog No.	Included Screw Size	Box / Bag (pcs.)	Inner Carton (pcs.)	Master Carton (pcs.)
11009	no screws	100	1000	5000
50275	#8 x 1-1/4"	5	50	1000



TB® Residential Drywall Anchors				
Catalog No.	Included Screw Size	Box / Bag (pcs.)	Inner Carton (pcs.)	Master Carton (pcs.)
11010	no screws	100	1000	5000
50300	#8 x 1-1/2"	5	50	1000
50525	#8 x 1-1/2"	20	200	2000



TC® Commercial Drywall Anchors				
Catalog No.	Included Screw Size	Box / Bag (pcs.)	Inner Carton (pcs.)	Master Carton (pcs.)
11011	no screws	100	1000	5000
50325	#8 x 1-3/4"	5	50	1000
50550	#8 x 1-3/4"	20	200	2000



TD™ Double Drywall Anchors				
Catalog No.	Included Screw Size	Box (pcs.)	Inner Carton (pcs.)	Master Carton (pcs.)
11021	no screws	50	500	2500



T35™ and T39™ Hollow Wall Anchors					
Catalog No.	Anchor	Included Screw Size	Box (pcs.)	Inner Carton (pcs.)	Master Carton (pcs.)
11029	T35	no screws	50	500	2500
11030	T39	no screws	25	250	1250